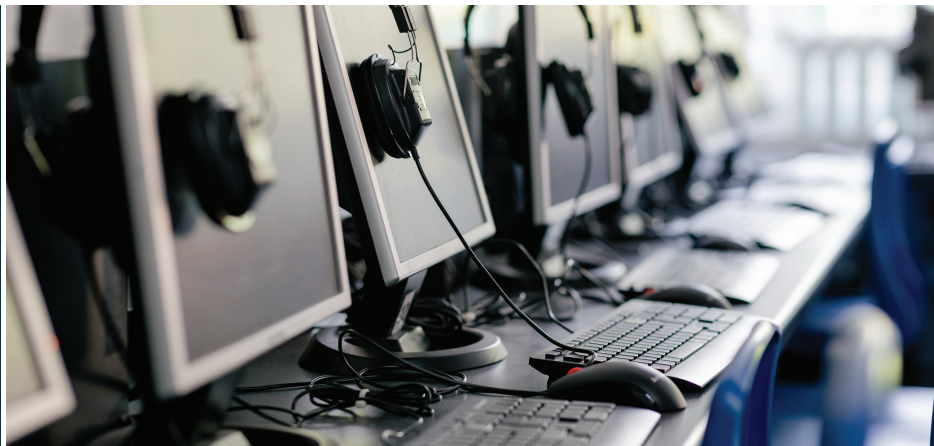


## EDUCATIONAL TECHNOLOGY

We provide practical solutions for new technologies.



*The integration of technology and education continues to be one of the most significant changes to schools with each generation.*

Our education technology practice is dedicated to finding practical solutions that harness new technologies to enhance learning while protecting the legal interests of school districts or other school entities. Our substantial experience in educational technology provides strong support to schools across the state who may not be able to stay on top of such a rapidly changing field, its increasingly complex technological trends, and the intricate array of legal and regulatory requirements.

Rather than each school entity or intermediate unit reinventing the wheel through new policies and procedures for each new tech trend, our considerable background with these evolving issues allows us to provide timely advice on the trend and guide how to successfully navigate the legal issues involved.

Our EdTech Pool Counsel service provides members with a vast array of resources and legal opinions on new technologies and legal issues as quickly as they emerge. We also provide up-to-the-minute model use policies on such areas as acceptable use, mobile devices, and electronic records management based upon changes both the law and technology.

Ultimately, we save you precious monetary resources and prevent costly litigation and legal missteps.

### OUR SERVICES

We guide clients in such areas as:

- Teacher and student use of social media, both in and out of school
- Use of mobile devices in schools
- Deployment and management of 1:1 devices
- Internet filtering of district devices
- E-discovery compliance
- Electronic records management
- E-rate and compliance with the Children's Internet Protection Act
- Legal Use of applications and programs in classroom settings
- Fair Use and copyright disputes
- AI and Facial Recognition in schools
- Accessibility issues

To learn more about our Educational Technology practice, contact us at 215-345-9111.

#### SOUTHEAST REGION OFFICE

331 East Butler Avenue, New Britain, PA 18901

**PHONE** 215 345 9111 | **FAX** 215 348 1147

#### CENTRAL REGION OFFICE

P.O. Box 956, Hershey, PA 17033

**PHONE** 717 641 9025 | **FAX** 717 641 9026

#### NORTHEAST REGION OFFICE

250 Kennedy Boulevard, Suite 1, Pittston, PA 18640

**PHONE** 570 654 2210 | **FAX** 570 655 1875